



# Info

---

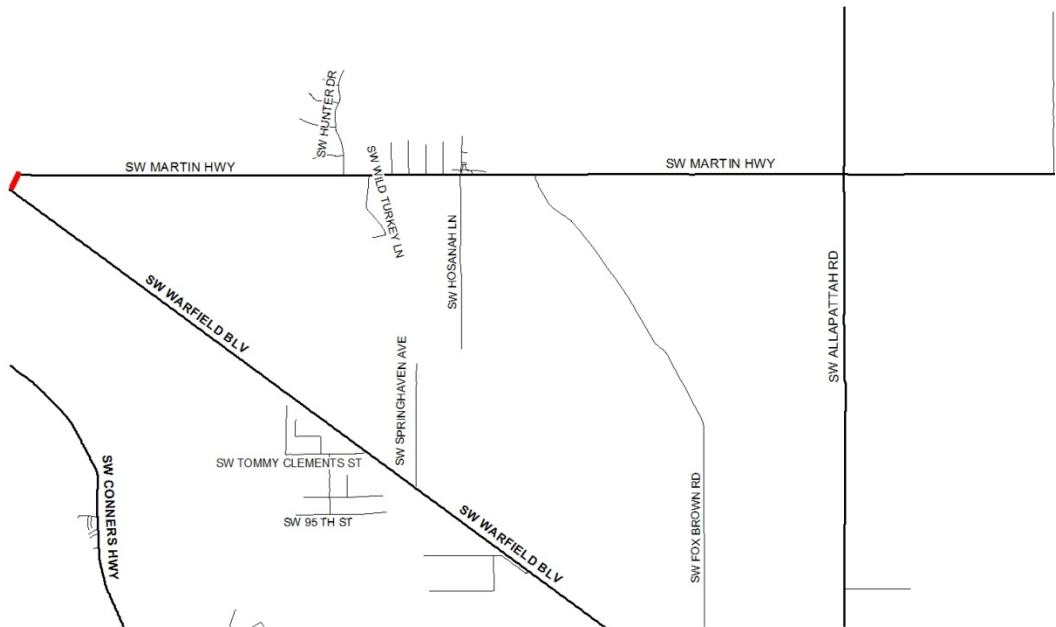
# Release

For immediate release: February 1, 2018  
Contact: Jana Cox, Engineering, 772-288-5462

## SW MARTIN HIGHWAY INTERMITTENT LANE CLOSURES

On Wednesday, February 7, 2018, Florida Power & Light will be installing a new concrete pole on SW Martin Highway, just east of SW Warfield Boulevard. This work will necessitate intermittent lane closures between the hours of 9:00 am and 3:00 pm weekdays. The work is anticipated to be complete by February 14, 2018. Motorists should exercise caution and use alternate routes through this area.

The Martin County Road Conditions Map is available via any mobile device or desktop with internet access to view all county lane/road closures: <https://conezone.martin.fl.us>.



-end-

LAW/ENG

This notification can be reproduced in an alternative format upon request by contacting the County ADA Coordinator (772-221-1396), the County Administration Office (772-288-5940) or Florida Relay 711.

MARTIN COUNTY